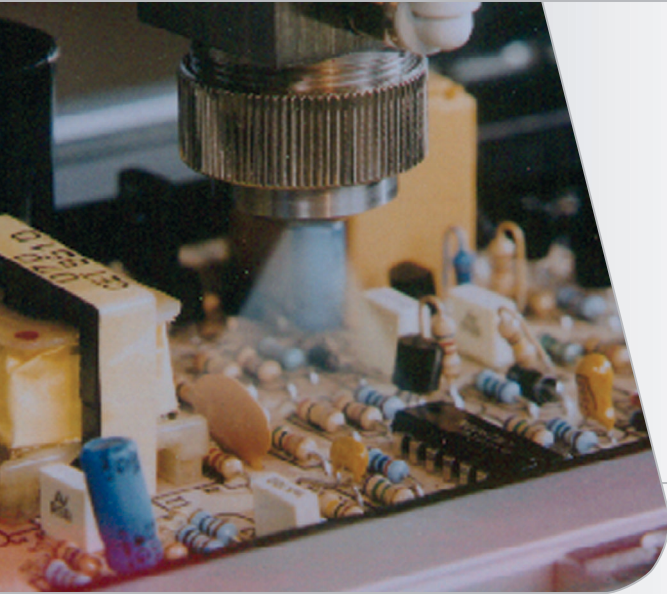




**WHERE
PRECISION
DRIVES
PRODUCTION**



SYSTEM SPECIFICATIONS

Dimensions:

147 mm x 22 mm x 22 mm
(5.80 in x 0.866 in x 0.866 in)

Weight:

9 oz

Viscosity Range:

1 cps - Paste

Operating Air Pressure:

30-100 PSI

Maximum Fluid Pressure:

3500 PSI

Wetted Parts:

Stainless Steel, Viton, Teflon®

Transfer Efficiency:

99%

Spray Pattern Width (Round Cap):

0.25 in to 1 in

Spray Pattern Width (Flat Cap):

0.75 in to 2 in +

FCS100

STAINLESS STEEL SPRAY VALVE

The FCS100 spray valve from PVA eliminates masking of circuit board components by producing a concentrated, atomized spray pattern ranging from 0.25 inches to over 2 inches in width. This atomized process results in transfer efficiencies in excess of 99%, significantly improving material utilization over manual applications.

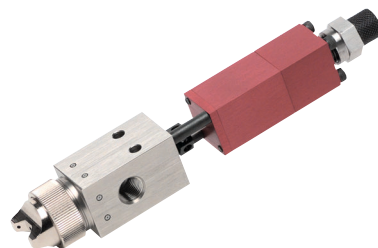
The FCS100 has many integrated features including:

- ▲ Stainless steel fluid body for superior material compatibility
- ▲ Divorced valve design prevents material contamination of the air body
- ▲ Compatible with all commercially available conformal coatings
- ▲ Adjustable flow control
- ▲ Low pressure, low volume atomized process
- ▲ Wide viscosity range offers versatility for virtually any spray application
- ▲ Interchangeable spray cap offers fan and oval-shaped patterns

Please specify either flat (fan) or round (circular) spray cap. The FCS100 is available on all new PVA2000™ and PVA650™ selective conformal coating work cells, can be retrofitted to any existing PVA system, or can be purchased for manual spray applications. For more information on PVA's dispensing capabilities, please contact one of our sales representatives at (518) 371-2684.

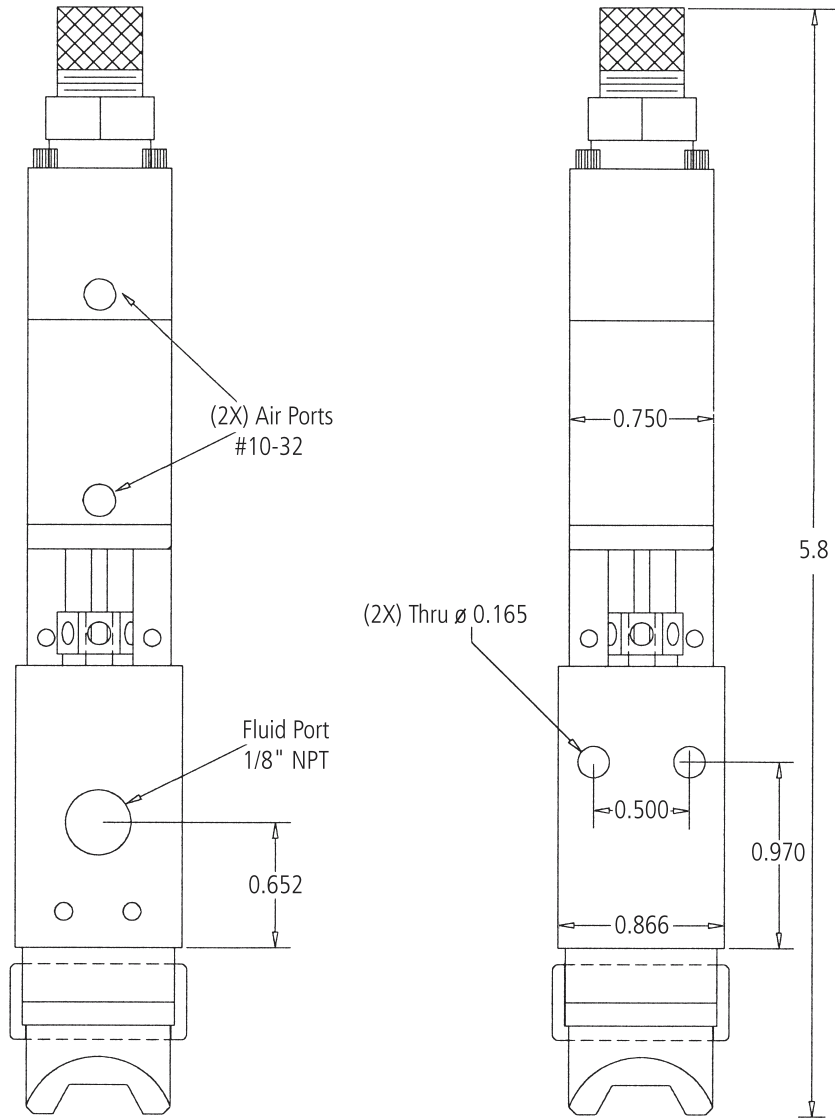
PVA also offers the following products to improve your dispensing application:

V317	Flat spray cap (fan-shaped pattern)
V318	Round spray cap (oval-shaped pattern)
FCS1-SP	FCS100 spare parts kit
FCS100-ES	Stainless steel extended spray valve
PVA2000	Selective conformal coating system
PVA650	Selective coating/dispensing system



15 Solar Drive
Halfmoon NY 12065
tel 518 371 2684
fx 518 371 2688
info@pva.net

Teflon® is a registered trademark of DuPont.



Measurements shown in inches.

PVA valves are designed for exclusive use with PVA conformal coating machines, which are covered by U.S. Patent numbers: 6,170,760 B1, 6,132,809, and 6,068,202. Use of components manufactured by other suppliers with the PVA conformal coating machine is prohibited. PVA warrants that its conformal coating machine and components meet all design requirements. Any use of PVA components, including valves, with systems manufactured by other suppliers, will void the warranty. Any use of the PVA conformal coating machine with components by other suppliers will also void the warranty.

15 Solar Drive
 Halfmoon NY 12065
 tel 518 371 2684
 fx 518 371 2688
 info@pva.net