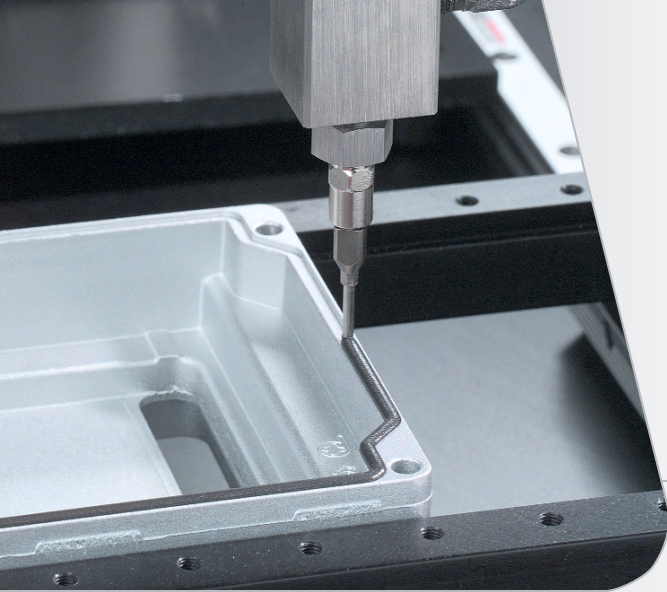




WHERE
PRECISION
DRIVES
PRODUCTION



SYSTEM SPECIFICATIONS

Dimensions:

201 mm x 29.21 mm x 29.21 mm
(7.9 in x 1.15 in x 1.15 in)

Weight:

19 oz
(1lb 3 oz)

Viscosity Range:

1 cps - Paste

Operating Air Pressure:

60-100 PSI

Maximum Fluid Pressure:

1500 PSI

Wetted Parts:

Stainless Steel, Viton, Teflon®, Carbide

FC300-C STAINLESS STEEL/CARBIDE FRONT CLOSING HIGH VOLUME NEEDLE VALVE

The FC300-C is a versatile high volume dispensing valve for any single-component bead, dot, potting or encapsulation project. It uses a hardened carbide needle and seat and redesigned packing to handle filled materials. Featuring a lightweight, compact design, the FC300-C is perfect for both automated and handheld processes.

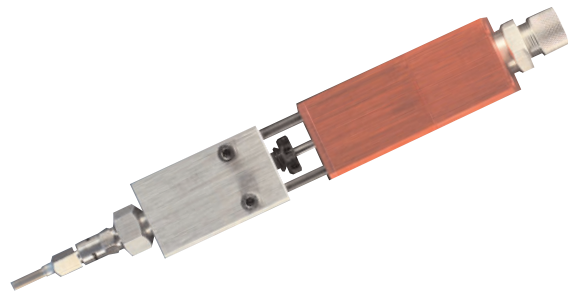
The FC300-C has many integrated features including:

- ▲ Stainless steel fluid body for superior material compatibility
- ▲ Carbide parts to handle filled materials
- ▲ Divorced valve design prevents material contamination of the air body
- ▲ 1/4" NPT fluid port allows for higher flow rates
- ▲ Adjustable flow control
- ▲ Reversible valve seat
- ▲ Spring-assisted valve closure for reliable cycle stops
- ▲ Compatible with all Luer-Lok™ needle tip designs

For more information on PVA's dispensing capabilities, please contact one of our sales representatives at (518) 371-2684.

PVA also offers the following products to improve your dispensing application:

FC3-C-SP	FC300-C spare parts kit
ST100	Digital valve controller
PVA3000	Automated dispensing system
PVA650	Selective coating/dispensing system
PVA250	Benchtop dispensing system



15 Solar Drive
Halfmoon NY 12065
tel 518 371 2684
fx 518 371 2688
info@pva.net

Luer-Lok™ is a Becton Dickinson and Co. trademark.
Teflon® is a registered trademark of DuPont.

