

SMT LEAD FORM & TRIM

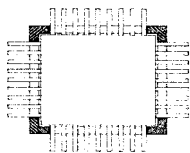
Solutions

Electronic Floating Anvil

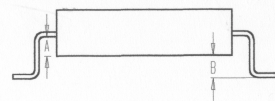
Form & Trim Tooling...Perfect Stand-Off Control

Fancort's state of the art Floating Anvil System incorporates patented electronics with precision stepper motor controls built into the press to automatically position the moveable form anvils each time the press cycles. This feature produces a constant standoff (B) regardless of the lead exit position (A) or ceramic thickness to a tolerance of $\pm .001"$.

- ♦ Easy to set the stand-off with built-in dial, graduated in increments of $.001"$
- ♦ Compatible with robotic cells including tinning cells
- ♦ Quadpacks are located using the lead frame corners with tapered lead-in for robotic placement
- ♦ Optional semi-automatic and fully automatic handlers for loading and unloading
- ♦ Patent #4,907,628
- ♦ Press available with 5" cylinder, or 6" for very large packages including MCMs
- ♦ 110 volt; shop air of 80 PSI; grounded for ESD protection



Package location
using lead frame



B remains constant regardless of A

Description

Flatpacks (standard size)
Quadpacks (standard size)
Press & Controls
Press & Controls for Robotics

Part Number

F-1F/2
F-1F/4
5000-2-5 or -6
5000-2-5 A