



WHERE
PRECISION
DRIVES
PRODUCTION



SYSTEM SPECIFICATIONS

- Maximum Fluid Pressure:**
3000 PSI (210 bar)
- Material Port Size:**
1/2 inch NPT
- Resolution:**
0.02 cc
- Viscosity Range:**
1 cps - Paste (unfilled)

FLOW MONITOR

Inline flow monitoring systems allow precise data feedback on material quantities applied during each application cycle. This data can be displayed on the front panel LCD screen, downloaded to a dedicated personal computer, or sent to a networked computing system for charting results over time. Flow monitoring is a reliable process control option that can alert an operator to a variety of issues that may affect the volume applied during an operation. As a dispense program is optimized, a targeted volume is achieved. Any allowable deviation from this target is determined by the programmer and is specific to the given dispense path. The application process will work seamlessly unless an out of tolerance volume is obtained. In the event a cycle does not produce a volume consistent with the allowable range the flow monitor will send a signal to the PVA system and a fault mode will ensue.

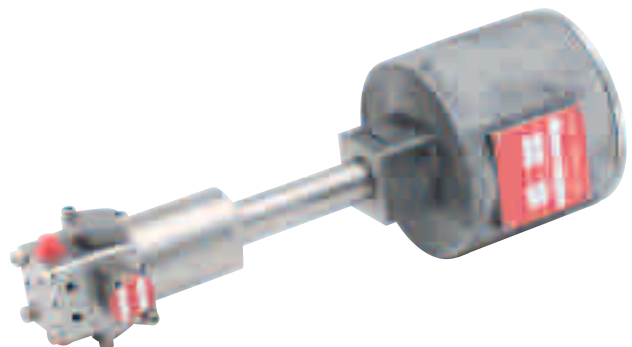
Flow monitoring has many integrated features including:

- ▲ Data acquisition capability for charting volume consistency over time
- ▲ Real time data feedback on every assembly processed
- ▲ Resolution of 0.02 cubic centimeters
- ▲ Wide viscosity range for unfilled materials

For more information on PVA's dispensing and coating capabilities, please contact one of our sales representatives at (518) 371-2684.

Flow monitoring is available on all PVA automated systems including:

PVA2000	Selective conformal coating system
PVA3000	Automated dispensing system
PVA550	Benchtop selective coating/dispensing system
PVA250	Benchtop dispensing system



15 Solar Drive
Halfmoon NY 12065
tel 518 371 2684
fx 518 371 2688
info@pva.net